



2000 OCEAN

by Enrique Norten

64 Boutique Oceanfront Residences

Denisse Tuffley
Real Estate Professional
805-757-0165
Dalton Wade Realty Group



Building Features

Boutique property with 64 exquisite oceanfront residences, consisting of half-floor residences, full-floor penthouse residences and an exceptional duplex sky villa with private pool deck; all in a spectacular landscaped beachfront setting

Envisioned by Enrique Norten of TEN Arquitectos

Interior and exterior amenity spaces exclusively designed and furnished by Minotti

Direct beach access with private beach amenities

Landscaped sculpture garden with a commissioned piece by David Harber

Private arrival and valet entrance



Services

Full-service valet parking

Building Security

Concierge; 24-hour lobby attendant

Denisse Tuffley
Real Estate Professional
805-757-0165
Dalton Wade Realty Group



Amenities

Two swimming pools with expansive sunrise and sunset views:

- Elevated oceanfront pool overlooking the Atlantic Ocean
- ‘Sunset Lounge’ pool with lounges and private cabanas overlooking the Intracoastal Waterway and surrounded by lush landscaping

Pool Service

Poolside cafe

Private beach amenities including chaise lounges, beach umbrellas, and beach attendant

State-of-the-art fitness center designed by Wright Fit with Life Fitness equipment

Freestanding spa pavilion with yoga room, treatment rooms, sauna, and atmospheric shower experience room nestled within the elevated landscape and opening onto the contemplative bamboo garden

Curated gardens by renowned landscape architect Sasaki

Tranquility garden with reflection pond

Assouline curated library

Oceanview owner’s lounge & function room with theatre and dedicated catering kitchen

Sunset Terrace — garden facing private function room

Pet Walk

Residences

Expansive flow through residences, with approximately 10-foot ceilings and private elevator landings, provide seamless indoor/outdoor experience, with extensive Atlantic Ocean and Intracoastal Waterway views through floor-to-ceiling sliding glass walls, opening up to 10-foot deep terraces

Half-floor residences provide views of the Atlantic Ocean and Intracoastal Waterway. 3 bedrooms, 3 ½ baths, den and expansive east and west terraces. 2,913 square feet of interior space

Full-floor residences provide 360-degree views of the Atlantic Ocean and Intracoastal Waterway. 5 bedrooms, 6 bathrooms, powder room and staff quarters, expansive east and west terraces. 5,832 square feet of interior space

Fully finished, furniture-ready residences, with personalized interior design services by Minotti

All stone custom **minotticucine** and Boffi kitchens, with fully integrated Gaggenau appliances

Unique full stone island with integrated stone sink and custom wood full-height cabinets

Soft close drawers with integrated LED lighting

Pietra Serena marble, Tuscany white porcelain and Sabiosa grigio porcelain flooring throughout residences

Custom full-slab stone master bath floating vanities and mirrors with integrated LED lighting

Floating bathtubs with Intracoastal Waterway views in all master baths

Dornbracht, Duravit and Blu Bath bathroom fixtures and accessories in all bathrooms

Walk-in closets in master bedroom (customized upgrades available) by B&B Italia

Residences pre-wired for Smart Home features

Lualdi Italian glass doors and cove lighting in every unit





Minotti

minotticucine

Boffi

2000 South Ocean Drive
Hallandale Beach, FL 33009

KAR
PROPERTIES

TEN ARQUITECTOS



ORAL REPRESENTATIONS CANNOT BE RELIED UPON AS CORRECTLY STATING THE REPRESENTATIONS OF THE DEVELOPER. FOR CORRECT REPRESENTATIONS, REFERENCE SHOULD BE MADE TO THE DOCUMENTS REQUIRED BY SECTION 718.503, FLORIDA STATUTES, TO BE FURNISHED BY A DEVELOPER TO A BUYER OR LESSEE.

This offering is made only by the Prospectus for the Condominium and no statement should be relied upon if not made in the Prospectus. This is not intended to be an offer to sell nor a solicitation of offers to buy in any jurisdiction where prohibited by law, and your eligibility for purchase will depend upon your state of residency. APPLICABLE TO NEW YORK RESIDENTS: This advertisement is not an offering. It is a solicitation of interest in the advertised property. No offering of the advertised units can be made and no deposits can be accepted, or reservations, binding or non-binding, can be made until an offering plan is filed with the New York State Department of Law. This advertisement is made pursuant to Cooperative Policy Statement No. 1, issued by the New York State Department of Law. CP16-0047, Sponsor: 2000 Ocean Drive LLC, 2000 South Ocean Drive, Hallandale Beach, Florida 33039. Stated square footages and dimensions are measured to the exterior boundaries of the exterior walls and the centerline of interior demising walls and in fact vary from the square footage and dimensions that would be determined by using the description and definition of the "Unit" set forth in the Declaration. The specifications, terms, conditions, services, finishes and statements referenced herein are proposed only, and the Developer reserves the right to modify, revise or withdraw any or all of same in its sole discretion and without prior notice. Equal Housing Opportunity

Full Floor Penthouse
Floors 34—38

Interior
5,832 FT² / 541.8 M²

Exterior
949 FT² / 88.1 M²

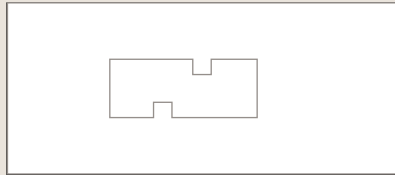
Total
6,781 FT² / 630 M²

Features

5 Bedrooms
6 Bathrooms
Powder Room
Staff Quarters
East & West Terraces
Private Elevator Landing



Keyplan



ORAL REPRESENTATIONS CANNOT BE RELIED UPON AS CORRECTLY STATING THE REPRESENTATIONS OF THE DEVELOPER. FOR CORRECT REPRESENTATIONS, REFERENCE SHOULD BE MADE TO THE DOCUMENTS REQUIRED BY SECTION 718.503, FLORIDA STATUTES, TO BE FURNISHED BY A DEVELOPER TO A BUYER OR LESSEE.

This offering is made only by the Prospectus for the Condominium and no statement should be relied upon if not made in the Prospectus. This is not intended to be an offer to sell nor a solicitation of offers to buy in any jurisdiction where prohibited by law, and your eligibility for purchase will depend upon your state of residency.

APPLICABLE TO NEW YORK RESIDENTS: This advertisement is not an offering. It is a solicitation of interest in the advertised property. No offering of the advertised units can be made and no deposits can be accepted, or reservations, binding or nonbinding, can be made until an offering plan is filed with the New York State Department of Law. This advertisement is made pursuant to Cooperative Policy Statement No. 1, issued by the New York State Department of Law, CP16-0047. Sponsor: 2000 Ocean Drive LLC, 2000 S. Ocean Drive, Hallandale Beach, Florida 33009. Stated square footages and dimensions are measured to the exterior boundaries of the exterior walls and the centerline of interior demising walls and in fact vary from the square footage and dimensions that would be determined by using the description and definition of the "Unit" set forth in the Declaration (which generally only include the interior space between the perimeter walls and excludes all interior structural components and other common elements). The plans, specifications, terms, conditions and statements contained in this brochure are proposed only, and the Developer reserves the right to modify, revise or withdraw any or all of same in its sole discretion and without prior notice. They should not be relied upon as representations, express or implied, of the final detail of the residences. The developer expressly reserves the right to make modifications, revisions, and changes it deems desirable in its sole and absolute discretion. All depictions of furnishings, finishes, appliances, counters, soffits, floor coverings and other matters of detail, including, without limitation, items of finish and decoration, are conceptual only and are not necessarily included in each Unit. Consult your Agreement and the Prospectus for the items included with the Unit. Equal Housing Opportunity.

North Residence
Half Floor Unit

Floors 5 — 33

Interior

2,913 FT² / 270.6 M²

Exterior

475 FT² / 44.1 M²

Total

3,388 FT² / 314.75 M²

Features

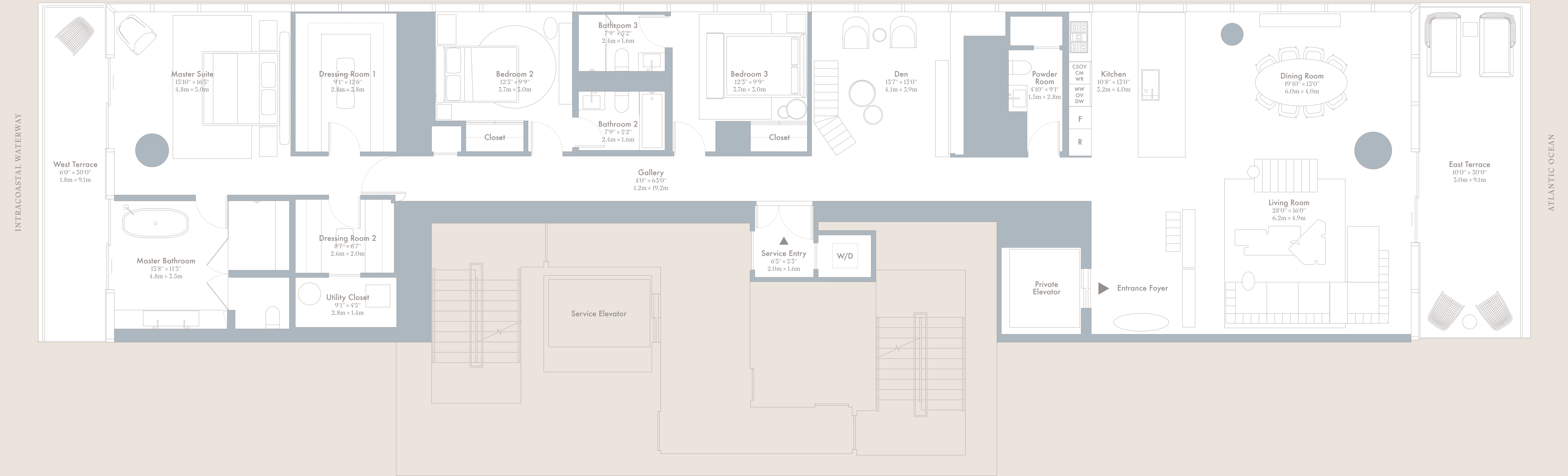
3 Bedrooms + Den

3 Bathrooms

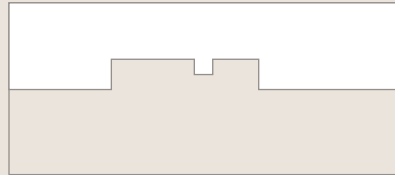
Powder Room

East & West Terraces

Private Elevator Landing



Keyplan



Scale: 1/4" Inch = 1' Foot

ORAL REPRESENTATIONS CANNOT BE RELIED UPON AS CORRECTLY STATING THE REPRESENTATIONS OF THE DEVELOPER. FOR CORRECT REPRESENTATIONS, REFERENCE SHOULD BE MADE TO THE DOCUMENTS REQUIRED BY SECTION 718.503, FLORIDA STATUTES, TO BE FURNISHED BY A DEVELOPER TO A BUYER OR LESSEE.

This offering is made only by the Prospectus for the Condominium and no statement should be relied upon if not made in the Prospectus. This is not intended to be an offer to sell nor a solicitation of offers to buy in any jurisdiction where prohibited by law, and your eligibility for purchase will depend upon your state of residency.

APPLICABLE TO NEW YORK RESIDENTS: This advertisement is not an offering. It is a solicitation of interest in the advertised property. No offering of the advertised units can be made and no deposits can be accepted, or reservations, binding or non-binding, can be made until an offering plan is filed with the New York State Department of Law. This advertisement is made pursuant to Cooperative Policy Statement No. 1, issued by the New York State Department of Law, 02/16/04/05. Sponsor: 2000 Ocean Drive LLC, 2000 S. Ocean Drive, Hallandale Beach, Florida 33009. Stated square footages and dimensions are measured to the exterior boundaries of the exterior walls and the centerline of interior dividing walls and in fact vary from the square footage and dimensions that would be determined by using the description and definition of the "Unit" set forth in the Declaration (which generally only includes the interior spaces between the perimeter walls and excludes all interior structural components and other common elements). The plans, specifications, terms, conditions and statements contained in this brochure are proposed only, and the Developer reserves the right to modify, revise or withdraw any or all of some in its sole discretion and without prior notice. They should not be relied upon as representations, express or implied, of the final detail of the residences. The developer expressly reserves the right to make modifications, revisions, and changes it deems desirable in its sole and absolute discretion. All depictions of furnishings, fixtures, appliances, counters, soffits, floor coverings and other matters of detail, including, without limitation, items of finish and decoration, are conceptual only and are not necessarily included in each Unit. Consult your Agreement and the Prospectus for the items included with the Unit. Equal Housing Opportunity.

South Residence
Half Floor Unit

Floors 5 — 33

Interior

2,913 FT² / 270.6 M²

Exterior

475 FT² / 44.1 M²

Total

3,388 FT² / 314.75 M²

Features

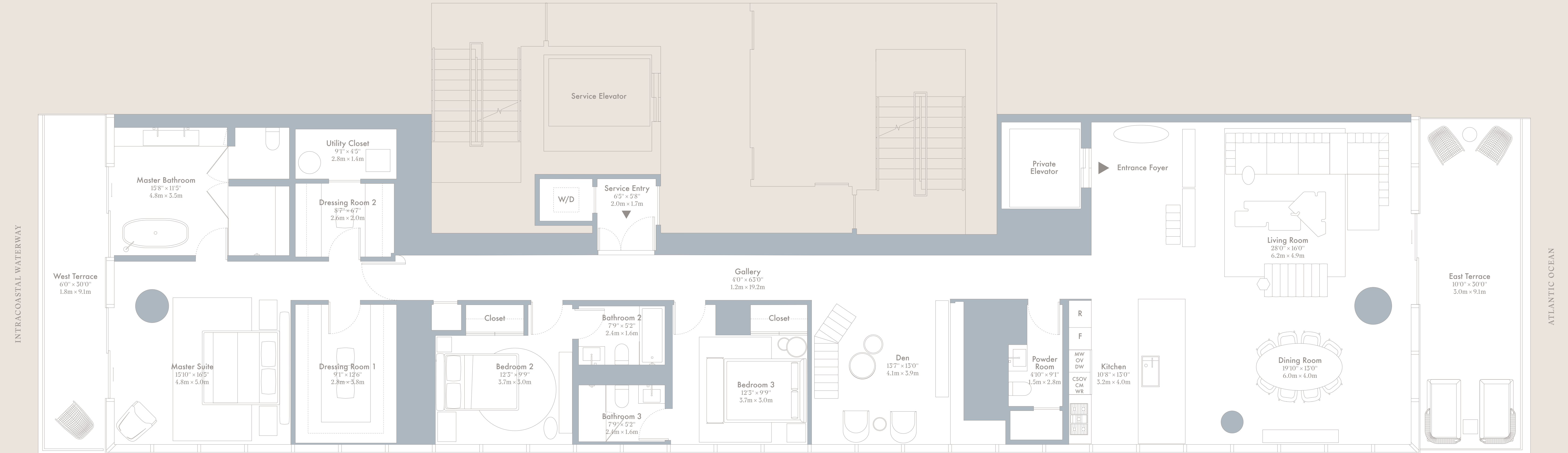
3 Bedrooms + Den

3 Bathrooms

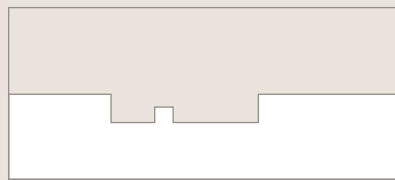
Powder Room

East & West Terraces

Private Elevator Landing



Keyplan



Scale: 1/4 Inch = 1 Foot

ORAL REPRESENTATIONS CANNOT BE RELIED UPON AS CORRECTLY STATING THE REPRESENTATIONS OF THE DEVELOPER. FOR CORRECT REPRESENTATIONS, REFERENCE SHOULD BE MADE TO THE DOCUMENTS REQUIRED BY SECTION 718.503, FLORIDA STATUTES, TO BE FURNISHED BY A DEVELOPER TO A BUYER OR LESSEE.

This offering is made only by the Prospectus for the Condominium and no statement should be relied upon if not made in the Prospectus. This is not intended to be an offer to sell nor a solicitation of offers to buy in any jurisdiction where prohibited by law, and your eligibility for purchase will depend upon your state of residency.

APPLICABLE TO NEW YORK RESIDENTS: This advertisement is not an offering. It is a solicitation of interest in the advertised property. No offering of the advertised units can be made and no deposits can be accepted, or reservation, binding or non-binding, can be made until an offering plan is filed with the New York State Department of Law. This advertisement is made pursuant to Cooperative Policy Statement No. 1, issued by the New York State Department of Law, 02/16/04/07. Sponsor: 2000 Ocean Drive LLC, 2000 S. Ocean Drive, Hallandale Beach, Florida 33009. Stated square footages and dimensions are measured to the exterior boundaries of the exterior walls and the centerline of interior dividing walls and in fact vary from the square footage and dimensions that would be determined by using the description and definition of the "Unit" set forth in the Declaration (which generally only includes the interior airspace between the perimeter walls and excludes all interior structural components and other common elements). The plans, specifications, terms, conditions and statements contained in this brochure are proposed only, and the Developer reserves the right to modify, revise or withdraw any or all of same in its sole discretion and without prior notice. They should not be relied upon as representations, express or implied, of the final detail of the residences. The developer expressly reserves the right to make modifications, revisions, and changes it deems desirable in its sole and absolute discretion. All depictions of furnishings, fixtures, appliances, counters, soffits, floor coverings and other matters of detail, including, without limitation, items of finish and decoration, are conceptual only and are not necessarily included in each Unit. Consult your Agreement and the Prospectus for the items included with the Unit. Equal Housing Opportunity.